

Summer 2006 *A Descriptive Report*

OVERVIEW

This report updates information provided in previous summer reports prepared by the Office of Resource Management and Planning (ORMP) with the results of summer 2006. In addition, new data analysis highlights potential new trends in summer instruction. Among the most noteworthy findings in this year's report are the following:

- Total summer enrollment (unduplicated headcount) decreased by 666 (7%) from the previous year;
- On average, undergraduate students attending summer classes took 9.2 units which is essentially the same workload level as the prior year;;
- The number of bachelor degrees earned in summer 2007 dropped slightly;
- Seniors account for 48% of all units attempted;
- The "8+8" incentive program did not increase the number of students who took 16 or more units;
- The number of students applying for financial aid grants decreased 3% from the prior year, and the number receiving grant aid dropped by 35%; and
- While total enrollment dropped by 7% the number of students attending who did not receive grant aid increased by 10%.

STUDENTS AND ENROLLMENT¹

Summer 2006 was the fifth year of full state funding for summer programs on the Davis campus.

Figure I reveals that both total enrollment and student credit hours in 2006 decreased 7% compared to the prior year. Both the total student credit hours and UC students FTE enrollment decreased 7.3 % from 2005. The number of UC graduate students (headcount) decreased only 2.3%, from 86 last year to 84 this year, but total graduate enrollment decreased by 6.5%, from 92 to 86. The total number of graduate students taking summer courses remains very small (86).

¹ Enrollment information provided in this report is based on several different groupings. Figures I and II display the basic enrollment statistics for 2002 through 2006 summer sessions both for all students (Figure I) and for UC-only students (Figure II). This information is based on data reported to the University of California, Office of the President (UCOP), and reflects the general campus students in all five summer session attendance periods. Health Sciences students, self-supported programs and working professionals are excluded. The enrollment data used for all other figures in this document reflect all students (i.e., UC and non-UC) attending Summer Sessions I, and 2 and Special Session. Therefore, the enrollment totals will sometimes be slightly different than those presented in Figures I and II.

Figure II indicates that the 2006 enrollment decline was distributed over all academic levels with upper division enrollment declining the least (5%). Interestingly, the number of bachelor degrees awarded during summer 2006, as displayed in Figure III, declined by 3% over the prior year, or somewhat less than the decline in upper division student enrollment.

Figure IV displays the trend in total number units taken by class level for undergraduate students. Seniors account for approximately half of the undergraduate student credit hours taken in summer. The senior share has been modestly but steadily growing each year since summer 2002.

Figure V documents the steady relationship over the years between students who take courses in one session and those who take courses in two sessions. Approximately 2/3 of all summer students take courses in one session while 1/3 take courses in both summer session 1 and 2.

Figure VI reveals the number of students and number of units taken in the two regular 2006 summer sessions. As reflected in the scatter plot, 33% of the students attending a single session took 8 units and another 24% took 4 units. Students taking two sessions follow a similar pattern. This chart does not include a small number of students who took three sessions in summer 2006

The campus offered the “8+8” Incentive Program to encourage more students to take a full load of summer courses spread over two sessions. Any entering or continuing UC Davis student who enrolled and successfully completed at least eight units of coursework in each of two summer sessions received a \$300 fee credit. There were 1,019 students in summer session 1 and 2 that were eligible for the incentive.

Figure VII shows more specifically how these undergraduate students were distributed by class level and for the top 20 majors (regular enrollment). In general, seniors accounted for 56% of the eligible students. In terms of levels, the distribution of students who qualified for the incentive does not differ markedly from the distribution of total summer enrollment and credit hours attempted (see Figures II and IV). As for majors, Design, Human Development, and Biochemistry and Molecular Biology differ the most from the regular school year rankings. Human Development and Design majors represent a larger share of the eligible summer students than during the regular year, while the proportion of Biochemistry and Molecular biology majors was much smaller than during the regular academic year. Overall, the 8+8 incentive did not increase the number of students who took 16 or more units. In fact the total number of students with 16 or more units (obtained by taking 8 units in each session) decreased in 2006 by approximately 100 students compared to the previous summer. In addition, the “cost” of this incentive in terms of foregone revenue (i.e., the fee credit) was \$313,000.

COURSES AND INSTRUCTORS

Figure VIII displays the trends in several workload variables. Primary Classes (all classes that are NOT defined as independent study) totaled 730 for summer 2006. While this is only three more classes than were offered in the prior year it represents a 5% increase in the share of the

total courses because the number of Independent Study courses decreased by 82, or just under 20% from 2005.

The 2.6% increase in the unduplicated count of instructors along with the 0.4% increase in the number of primary courses offered resulted in a slight decrease in the course-to-instructor ratio for primary courses in summer 2006 compared to the prior year. For independent study classes, the number of classes decreased by a greater percentage than the number of instructors. Consequently the course-to-instructor ratio fell by a relatively larger percentage in 2006 compared to the change in the primary course ratio.

Figure IX provides additional information on instructors who taught primary classes. Regular rank faculty accounted for 25% of all instructors of primary classes in summer 2006, an increase of 1% over 2005. The proportion of classes taught by lecturers remained unchanged at 41%, and graduate students decreased by 1% to 29%.

Figure X compares the distribution of instructors during the 2005-06 academic year and summer 2005 and summer 2006. Ladder rank participation in summer increased slightly compared to the prior year, but it continues to lag the regular academic year.

GATEWAY COURSES

Figure XI examines the changes in so-called gateway course enrollments between summer 2002 and 2006. Gateway courses are important to undergraduate students because they are either prerequisites to advanced courses in numerous disciplines or are considered critical for entering students (i.e., writing and composition). For chemistry courses, enrollment and the average class size decreased 6% compared to the prior year. In writing and composition courses, average class size decreased 13% while total enrollment decreased 12%. For physics, both enrollment and average class size decreased by 9%.

COURSE OFFERINGS AND ENROLLMENT DISTRIBUTION BY CLASS SIZE

Figure XII displays the distribution of courses and student enrollment by class size for the last five summer sessions for primary, credit bearing courses. All classes offered each summer were assigned to one of six groups based on their enrollment: 1-10, 11-20, 21-30, 31-40, 41-50, and over 50. For example, if 2 sections of Biological Sciences 001A were offered in summer 2006 and one section had 55 students while the other had 35 students, each class would be counted in their respective enrollment groupings. As shown in Figure XII, the share of classes that have more than 30 students has declined over the five year period while the percent of classes with enrollment of 20 or less has significantly increased. The graph at the bottom of Figure XII shows a similar but different perspective of class size utilization. In this graph student enrollment (duplicated counts) are used to measure class size frequency. For example a student enrolled in 2 classes, one had 75 students and the other class had 12 students. This student was counted twice, once in the class size category over 50 and again for the class size category 11-20. Once again, the trend noted in the first graph is apparent. The percentage of enrollment in large classes consistently decreases over the time period examined while enrollment in the smaller class groups consistently increases.

Figure XIII shows the same data presented in Figure XII at the college/division level. In general, like the graphs of the aggregated data in Figure XII, the trend toward smaller courses is notable for all units except CBS and CA&ES. Over the 5 years examined, CBS has sustained both its percentage of classes over 50 (48% to 44%) and the distribution of enrollment (79% to 83%). In contrast, CA&ES has seen a dramatic decrease in courses with enrollments of 21-30, but large growth in the classes with 20 or less students and classes with 41 to 50 students.

In addition, these graphs display the proportion of all classes offered and all enrollment (duplicated count) by academic unit. For example in summer 2006 HArCs offered 39% of all classes and had 26% of all enrollments while CBS offered 6% of all classes and had 12% of all enrollments. This wide variation in the distribution of classes and enrollment has implications for any changes in the size or number of classes offered in the future.

Figure XIV displays basic financial aid data for summer and the regular academic year along with other summer statistics for the four year period ending 2006. In general, the campus allocated substantially more funds for financial aid in summer 2005 than it did in summer 2006. Thus, the number of students that could receive the \$1,200 aid package that was offered by the campus in both years was correspondingly much smaller in summer 2006. This factor accounts for the bulk of the 35% decrease in students receiving aid in summer 2006. In contrast, the number of students attending summer who did not receive financial aid increased by 10% over the prior year. Overall, however, this increase was not enough to offset the decrease in financial aid recipients. Consequently, total enrollment decreased compared to the prior year.

STUDENT FEES

Figure XV provides a comparison of summer fees since 2002. It is interesting to note that summer enrollment generally increased until 2006, when it declined by 7% (see Figures I and II). This decrease occurred in spite of the fact that there was no significant increase in either the per unit fee or student services fees.

FIGURE I

**Summary of Student Enrollment and Instruction Statistics
Summer 2002 through 2006**

	<u>2002^{1/}</u>	<u>2003</u>	<u>2004</u>	<u>2005</u>	<u>2006</u>	<u>Change From PY</u>	<u>Percent Change From PY</u>
Headcount (unduplicated)							
Undergraduate	7,790	9,334	9,309	9,835	9,169	(666)	-7%
Graduate	82	71	62	92	86	(6)	-7%
Non UC	412	359	313	376	348	(28)	-7%
Total	<u>8,284</u>	<u>9,764</u>	<u>9,684</u>	<u>10,303</u>	<u>9,603</u>	<u>-700</u>	<u>-7%</u>
Credit Hours							
Undergraduate	67,174	84,414	82,494	91,306	84,604	(6,702)	-7%
Graduate	430	341	333	405	437	32	8%
Non UC	2,810	2,331	2,032	2,404	2,233	(171)	-7%
Total	<u>70,414</u>	<u>87,086</u>	<u>84,859</u>	<u>94,115</u>	<u>87,274</u>	<u>-6,841</u>	<u>-7%</u>
FTE (UC Only)							
Undergraduate	1,493	1,876	1,833	2,029	1,879	(150)	-7%
Graduate	12	9	9	11	12	1	9%
Total	<u>1,505</u>	<u>1,885</u>	<u>1,842</u>	<u>2,040</u>	<u>1,891</u>	<u>-149</u>	<u>-7%</u>
Credit Hours per Headcount (UC Only)							
Undergraduate	8.62	9.04	8.86	9.28	9.23	(0.06)	-1%
Graduate	5.24	4.80	5.37	4.40	5.08	0.68	15%
Total	<u>8.59</u>	<u>9.01</u>	<u>8.84</u>	<u>9.24</u>	<u>9.19</u>	<u>0.62</u>	<u>7%</u>
Change from prior year		5%	-2%	5%	-1%		

1/ First year of state support

Note:

This report ties to the numbers reported to UCOP which reflect only the general campus. They are based on all summer sessions, and exclude self supported programs, working professionals, and health sciences students.

Sources: Institutional Planning and Analysis using data from Banner Student information System and the Instructional Activity Information System (IAIS) and Annual Report to UCOP - Summer Headcount and SCH.

FIGURE II

**Summary of UC Student Statistics for Summer Instruction
Summer 2002 through 2006**

	2002		2003		2004		2005		2006				Change from Prior Year			
	Total		Total		Total		Total		UCD		Other UC		Total		#	Percent
	#	Percent	#	Percent	#	Percent	#	Percent	#	Percent	#	Percent	#	Percent		
Headcount																
Lower Division	2,371	30%	2,560	27%	2,354	25%	2,477	25%	1,971	22%	247	97%	2,218	24%	-259	-10%
Upper Division	5,316	68%	6,659	71%	6,852	73%	7,298	74%	6,927	77%	5	2%	6,932	75%	-366	-5%
Credential	103	1%	115	1%	103	1%	60	1%	19	0%	-	0%	19	0%	-41	-68%
Subtotal	7,790	99%	9,334	99%	9,309	99%	9,835	99%	8,917	99%	252	99%	9,169	99%	-666	-7%
Graduate	82	1%	71	1%	62	1%	92	1%	84	1%	2	1%	86	1%	-6	-7%
Total	7,872	100%	9,405	100%	9,371	100%	9,927	100%	9,001	100%	254	100%	9,255	100%	-672	-7%
			100%		100%		100%		97%		3%		100%			
Credit Hours																
Lower Division	19,956	30%	22,563	27%	20,714	25%	22,705	25%	18,501	22%	1,858	98%	20,359	24%	-2,346	-11%
Upper Division	45,684	68%	60,274	71%	60,279	73%	67,634	74%	63,859	77%	32	2%	63,891	75%	-3,743	-6%
Credential	1,534	2%	1,577	2%	1,501	2%	967	1%	354	0%	-	0%	354	0%	-613	-41%
Subtotal	67,174	99%	84,414	100%	82,494	100%	91,306	100%	82,714	99%	1,890	100%	84,604	99%	-6,702	-8%
Graduate	430	1%	341	0%	333	0%	405	0%	430	1%	7	0%	437	1%	32	10%
Total	67,604	100%	84,755	100%	82,827	100%	91,711	100%	83,144	100%	1897	100%	85,041	100%	-6,670	-8%
			100%		100%		100%		98%		2%		100%			

Note:

This report ties to the numbers reported to UCOP and reflect only the general campus. They are based on all summer sessions, and exclude self supported programs, working professionals, and health sciences students.

Data Source: Institutional Planning and Analysis using data from Banner Student Information System and the Instructional Activity Information System (IAIS)
Annual Report to UCOP - Summer Enrollment

FIGURE III

**Comparison of Degrees Awarded and Certificates Earned
Duplicated Counts
Summer 2002 through 2006 ***

	<u>2002</u>	<u>2003</u>	<u>2004</u>	<u>2005</u>	<u>2006</u>	Percent Change over <u>2005</u>
Bachelor of Arts	256	314	348	371	373	1%
Bachelor of Arts and Science	6	7	7	21	10	-52%
Bachelor of Science	<u>303</u>	<u>339</u>	<u>369</u>	<u>406</u>	<u>394</u>	-3%
Subtotal Bachelor Degrees	<u>565</u>	<u>660</u>	<u>724</u>	<u>798</u>	<u>777</u>	-3%
%Change over Prior Year		17%	10%	10%	-3%	
Master Degrees	148	184	183	189	194	3%
Doctorates	111	104	117	138	140	1%
Certificates **	<u>50</u>	<u>54</u>	<u>62</u>	<u>34</u>	<u>44</u>	29%
Total	<u>874</u>	<u>1002</u>	<u>1086</u>	<u>1159</u>	<u>1155</u>	0%
%Change over Prior Year		15%	8%	7%	0%	

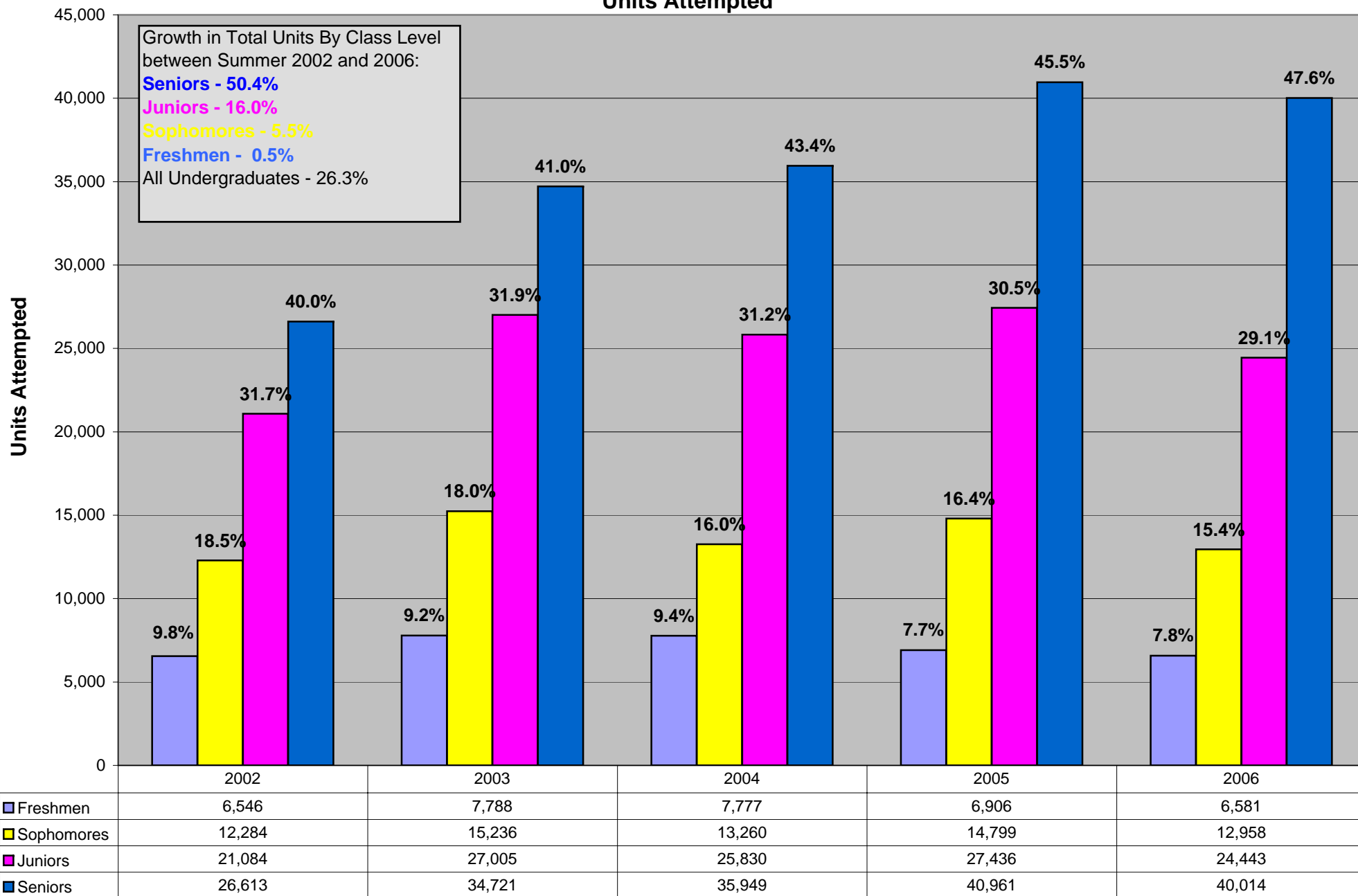
Includes all degrees awarded - if a student received multiple degrees, each degree is counted.

Data Source: Data from Banner Student Information System - As of November 28, 2006 -

* Prior year numbers have been updated to reflect adjustments made in Banner for degrees awarded in previous summer sessions after the 2005 Report was compiled

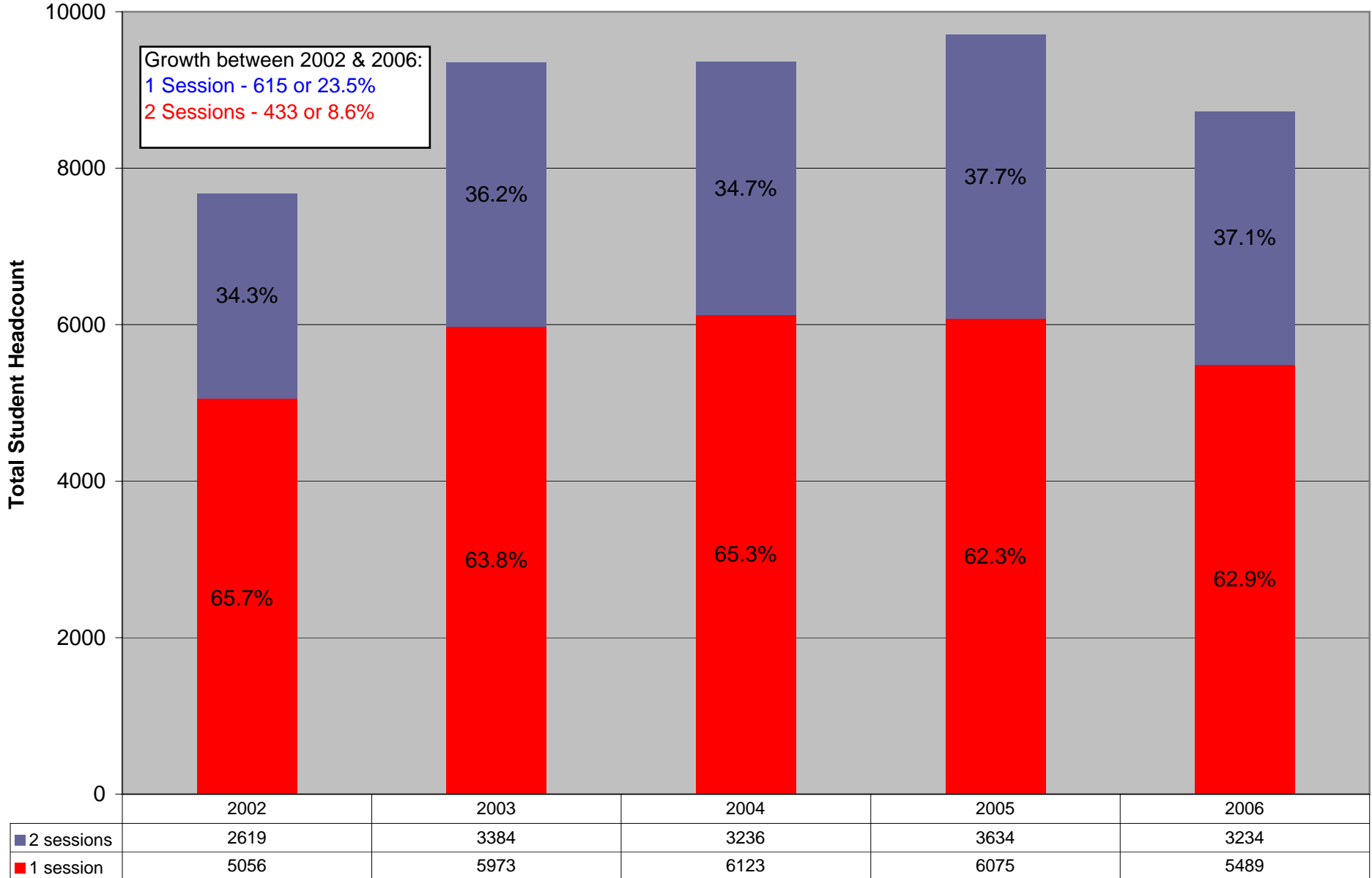
** Certificates include Education, Family Nurse Practitioners and Physician Assistants

Trends in Summer Session Enrollment by Class Level - Undergraduates Units Attempted



Distribution of Students Attending One and Two Summer Sessions Summer 2002 through 2006

(Includes Summer Sessions 1 and 2 only)



Note: the total of 8,623 is less than the total headcount because a small number of students took three sessions and are not included in this figure.

**Number of Students & Number of Units Taken
by Students Attending One and Two Summer 2006 Sessions
(unduplicated count)
(Includes only Summer Sessions 1 and 2)**

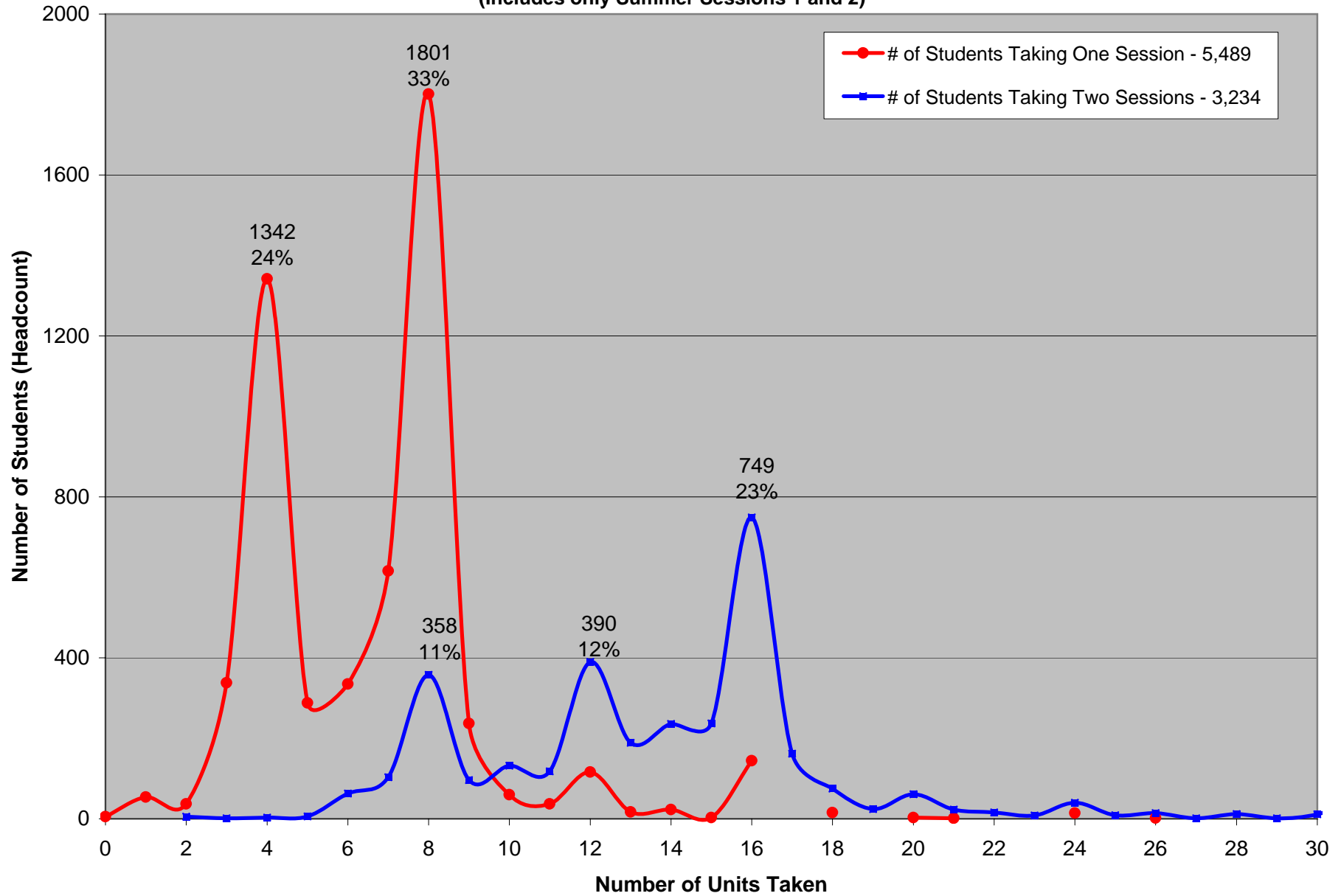


FIGURE VII

Incentive Program Students Taking 8 or More Units In Both Summer Session 1 and 2										
Major	Rank			Number of Students By Class Level for All Majors with 15 Or More Students						
	Summer	Regular Year 3 Qrt Avg (2005- 06)	Summer over/(under) Reg Year	Fresh.	Soph.	Junior	Senior	TOTAL	% of total	Cum %
Psychology	1	2	-1	1	7	22	72	102	10.0%	10.0%
Economics	2	4	-2	1	6	21	49	77	7.6%	17.6%
Sociology	3	8	-5	2	4	15	33	54	5.3%	22.9%
Biological Sciences	4	1	3	2	17	17	16	52	5.1%	28.0%
Political Science	5	5	0		3	15	27	45	4.4%	32.4%
English	6	7	-1		2	8	27	37	3.6%	36.0%
Human Development	7	18	-11			4	31	35	3.4%	39.5%
Managerial Economics	8	13	-5			5	26	31	3.0%	42.5%
Undeclared-Life Sciences	9	6	3	1	11	15	2	29	2.8%	45.3%
Communication	10	9	1		2	8	18	28	2.7%	48.1%
Design	11	26	-15			14	12	26	2.6%	50.6%
Mechanical Engineering	12	16	-4		1	3	21	25	2.5%	53.1%
Biochem & Molecular Biology	13	3	10	4	7	5	8	24	2.4%	55.4%
International Relations	14	10	4			8	16	24	2.4%	57.8%
Exploratory Program	15	15	0		10	11	2	23	2.3%	60.1%
History	16	19	-3	1	2	4	13	20	2.0%	62.0%
Neurobio,Physiology & Behavior	17	14	3	1	2	4	9	16	1.6%	63.6%
Undeclared-Physical Sciences	18	21	-3	2	9	4	1	16	1.6%	65.2%
Computer Science & Engineering	19	27	-8	1	4	3	7	15	1.5%	66.6%
Electrical Engineering	20	22	-2			4	11	15	1.5%	68.1%
Sub-total, # In Majors With at least 15 students				16	87	190	401	694		
TOTAL				31	145	268	575	1019		
Percent of Total				3%	14%	26%	56%			

Summary of Instructors and Courses Taught

Summer 2002 through 2006

	2002	2003	2004	2005	2006	Change	% Change over PY
Primary Classes							
Undergraduate	472	581	610	716	719	3	
Graduate	12	17	17	11	11	0	
Subtotal (unduplicated)	484	598	627	727	730	3	0.4%
Percent of Total	56%	56%	61%	63%	68%		
Instructors (total unduplicated headcount)	385	444	467	535	549	14	2.6%
Courses per Instructor	1.26	1.35	1.34	1.36	1.33	-0.03	-2.1%
Independent Study Classes							
Undergraduate	351	436	374	388	307	-81	
Graduate	36	26	30	35	34	-1	
Subtotal (unduplicated)	387	462	404	423	341	-82	-19.4%
Percent of Total	44%	44%	39%	37%	32%		
Instructors (total unduplicated headcount)	170	213	190	181	157	-24	-13.3%
Courses per Instructor	2.28	2.17	2.12	2.34	2.17	-0.17	-7.1%
Total Classes							
Undergraduate	823	1017	983	1104	1026	120	
Graduate	48	43	47	46	45	-1	
Total (unduplicated)	871	1060	1030	1150	1071	119	10.4%
Instructors (total unduplicated headcount)	555	657	657	716	706	-10	-1.4%
Courses per Instructor	1.57	1.61	1.57	1.61	1.52	0.04	2.3%

Data Source: Institutional Planning and Analysis using data from the Instructional Activity Information System (IAIS) Annual Report to UCOP - Faculty Teaching Activity (Table 3)

FIGURE IX

Summary of Instructors Who Taught Primary Courses in Summer

	<u>2002</u>		<u>2003</u>		<u>2004</u>		<u>2005</u>		<u>2006</u>		<u>Change from 2005</u>	<u>% Change</u>
	<u>Headcount (unduplicated)</u>	<u>% of Total</u>	<u>Headcount (unduplicated)</u>	<u>% of Total</u>	<u>Headcount (unduplicated)</u>	<u>% of Total</u>	<u>Headcount (unduplicated)</u>	<u>% of Total</u>	<u>Headcount (unduplicated)</u>	<u>% of Total</u>		
Regular Rank Faculty	68	19%	89	20%	94	20%	128	24%	136	25%	8	6%
Non-Regular Rank & Other Faculty	8	2%	11	2%	3	1%	6	1%	5	1%	-1	-17%
Lecturers	147	41%	170	38%	204	44%	218	41%	223	41%	5	2%
Emeriti/Recalled Faculty	12	3%	15	3%	12	3%	24	4%	25	5%	1	4%
Graduate Students (Includes Associate Ins and TAs)	121	34%	159	36%	154	33%	159	30%	160	29%	1	1%
Total	<u>356</u>	100%	<u>444</u>	100%	<u>467</u>	100%	<u>535</u>	100%	<u>549</u>	100%	<u>14</u>	3%

Data Source: Institutional Planning and Analysis using data from the Instructional Activity Information System (IAIS)
Annual Report to UCOP - Faculty Teaching Activity (Table 3)

FIGURE X

**A Comparison of Instructors Who Taught Primary Courses
Summer vs. Regular Academic Year**

	Summer 2005 Instructors % of Total Instruction	Summer 2006 Instructors % of Total Instruction	2005-06 Acad Year Instructors % of Total Instruction	Summer 2006 Over/ (Under) Academic Year
Regular Rank Faculty	24%	25%	68%	-43%
Non-Regular Rank & Other Faculty	1%	1%	8%	-7%
Lecturers	41%	41%	18%	23%
Emeriti/Recalled Faculty	4%	5%	1.0%	4%
Graduate Students (Includes Associate Ins and TAs)	30%	29%	5%	24%
Total	100%	100%	100%	

Data Sources: Institutional Planning and Analysis using data from the Instructional Activity Information System (IAIS) and Annual Report to UCOP - Faculty Teaching Activity (Table 3)

Gateway Courses
A Comparison of Courses Offered in Summer 2002 through 2006

Subje	Course Title	Course #	ENROLLMENT					Change from Prior Year	% Change
			2002	2003	2004	2005	2006		
CHEMISTRY									
	General Chem	002A	86	105	92	113	87	-26	
	General Chem	002B	118	133	134	147	114	-33	
	General Chem	002C	122	254	204	213	184	-29	
	Subtotal General Chem		326	492	430	473	385	-88	-19%
	Organic Chemistry-Brief	008A	89	106	95	88	99	11	
	Organic Chemistry-Brief	008B	92	143	145	124	117	-7	
	Subtotal Chemistry Brief		181	249	240	212	216	4	2%
	Organic Chem Health Sci	118A	122	167	150	136	127	-9	
	Organic Chem Health Sci	118B	129	147	162	169	162	-7	
	Organic Chem Health Sci	118C	123	201	255	295	319	24	
	Subtotal Chem Health Sci		374	515	567	600	608	8	1%
	Chemistry Total		881	1,256	1,237	1,285	1,209	-76	-6%
ENGLISH									
	Expository Writing	001	92	104	123	110	104	-6	-5%
	Intro To Lit	003	94	108	98	103	97	-6	-6%
	Advanced Composition	101	334	385	367	298	274	-24	-8%
	Reports and Tech Writing	104A	98	120	117	96	106	10	
	Legal Writing	104B	23	27	25	25	0	-25	
	Journalism	104C	21	16	19	38	21	-17	
	Writing in Education	104D	50	38	26	37	18	-19	
	Writing in Science	104E	71	94	98	62	60	-2	
	Subtotal 104 Series		263	295	285	258	205	-53	-21%
	English Total		783	892	873	769	680	-89	-12%
PHYSICS									
	General Physics	007A	217	230	218	201	171	-30	
	General Physics	007B	157	218	235	209	164	-45	
	General Physics	007C	190	266	221	271	266	-5	
	Subtotal General Physics		564	714	674	681	601	-80	-12%
	Classical Physics	009A	60	66	41	29	44	15	
	Classical Physics	009B	51	67	54	43	40	-3	
	Classical Physics	009C			47	50	45	-5	
	Subtotal Classical Physics		111	133	142	122	129	7	6%
	Physics Total		675	847	816	803	730	-73	-9%

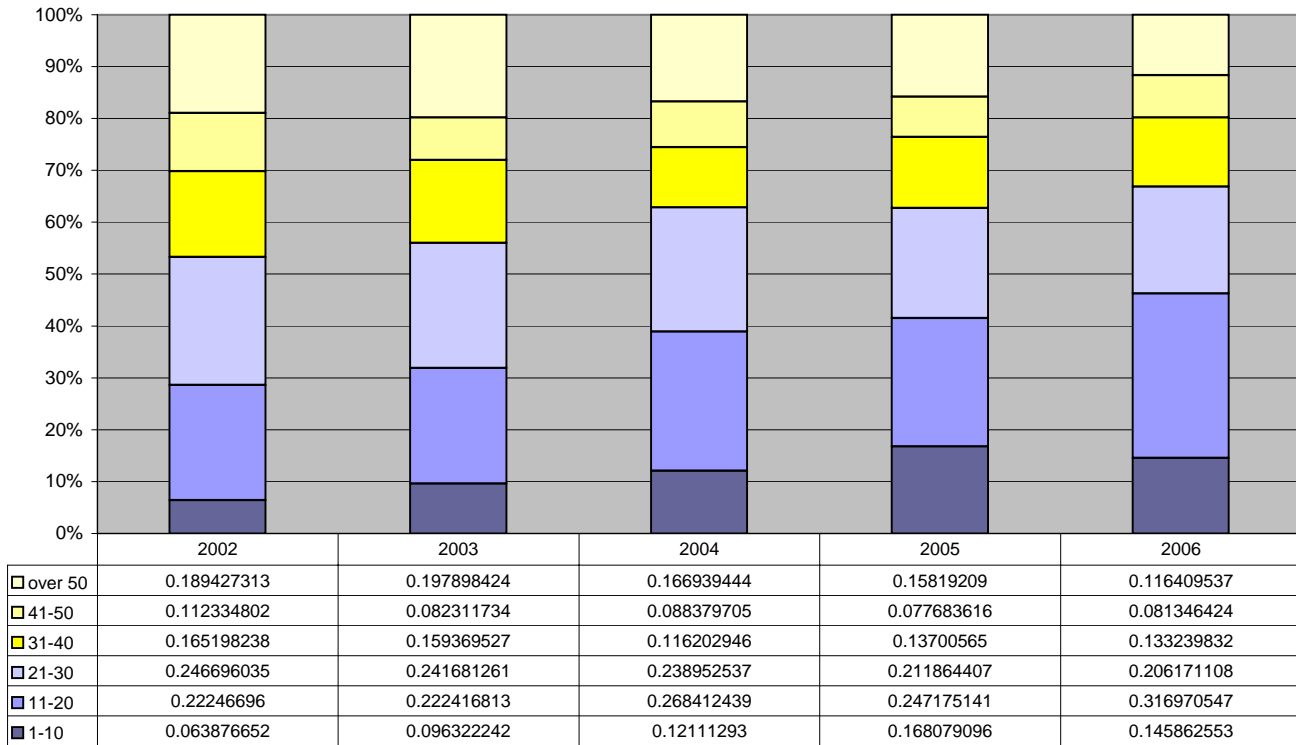
Average Summer Class Sizes for Undergraduate Class in Gateway Courses

	2,002	2,003	2,004	2,005	2,006	
Chemistry Courses	110.1	125.6	154.6	160.6	151.1	-6%
English Courses	20.8	20.9	20.4	22.2	19.4	-13%
Physics Courses	84.4	105.9	90.7	89.2	81.1	-9%

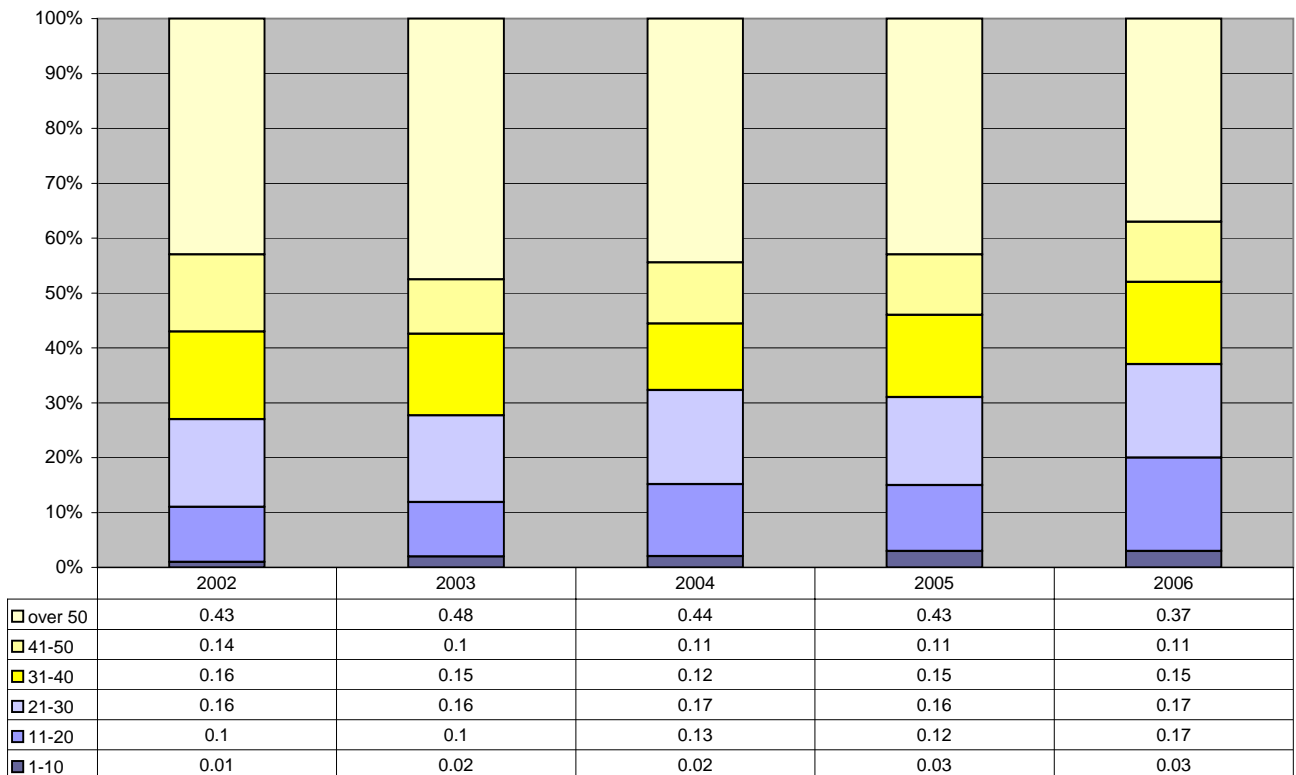
Note: Gateway courses include English: 001, 003, 101, 104A-E; Chemistry 002A-C, 008A, 118A-C; and Physics 007A-C and 009A-C.

Data Source: Institutional Planning and Analysis using data from the Instructional Activity Reporting System (IAIS) -* includes only credit bearing sections

**Summer Session Enrollment
Percent of Total Sections by Class Size Range
Summer 2002 through 2006**



**Percent of Student Enrollment by Class Size Ranges
Summer 2002 through 2006
(Duplicated Count)**



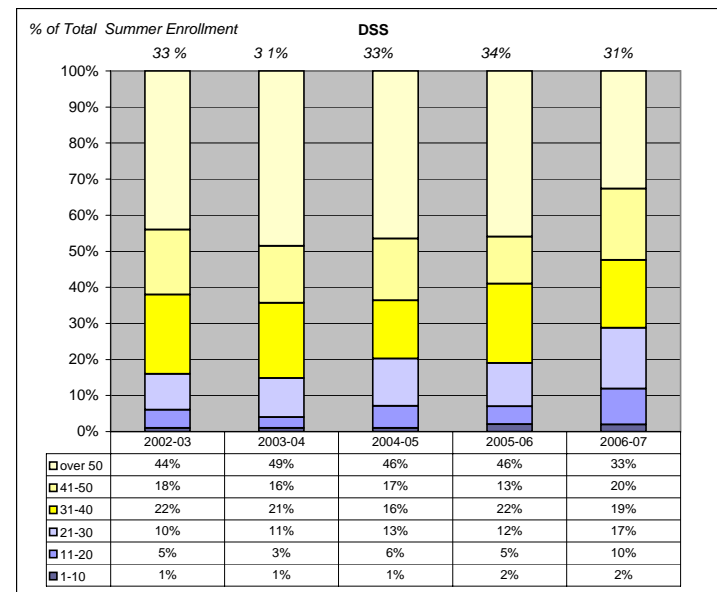
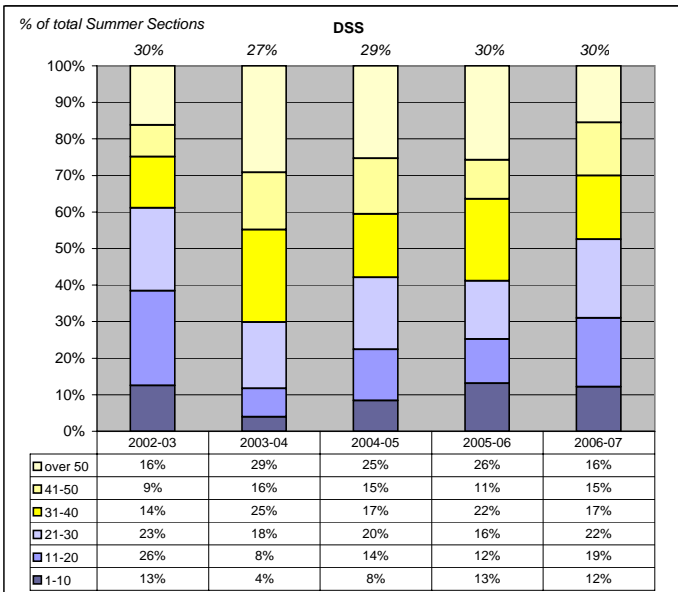
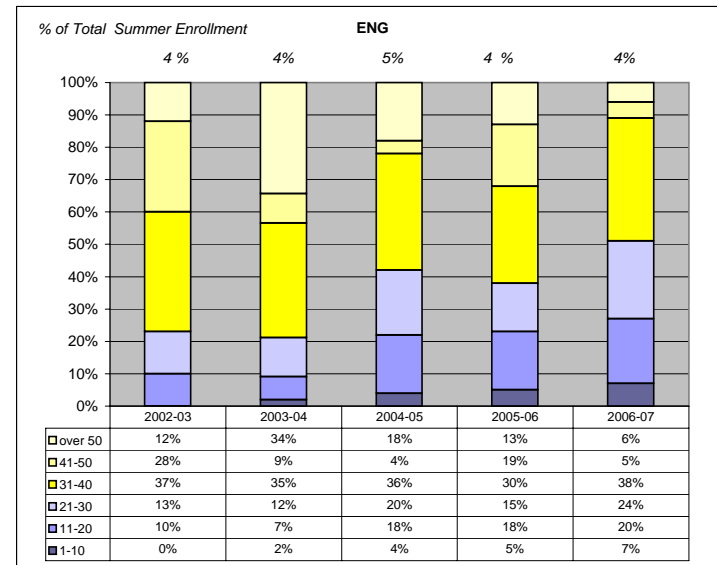
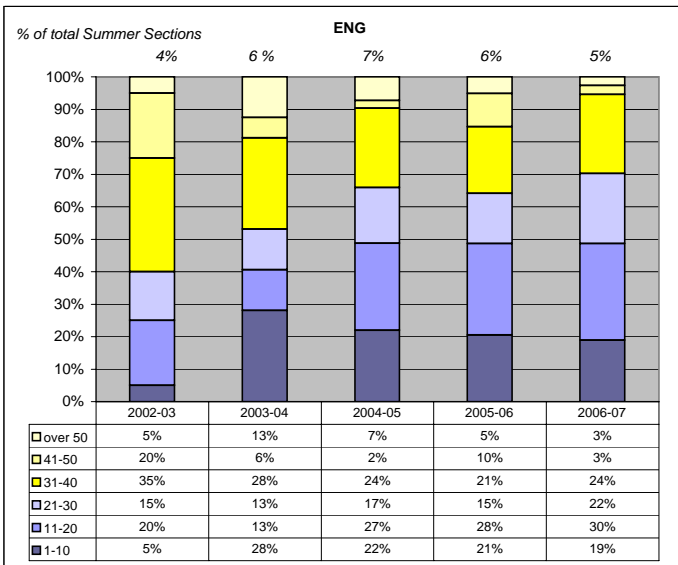
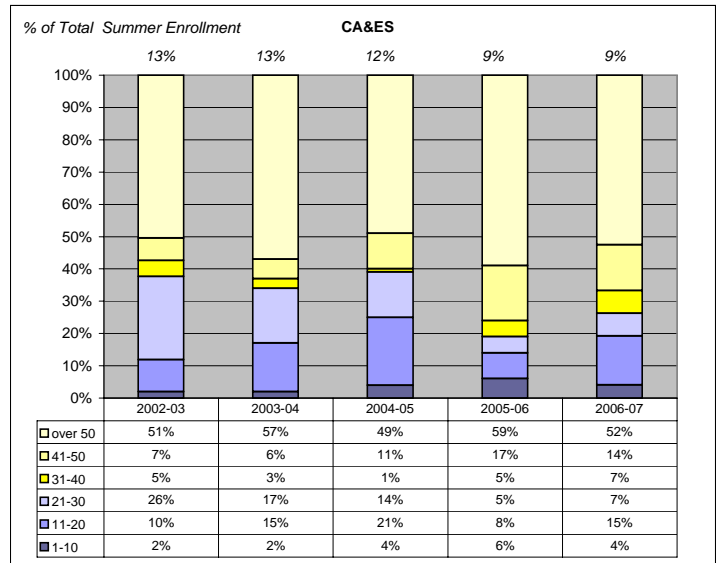
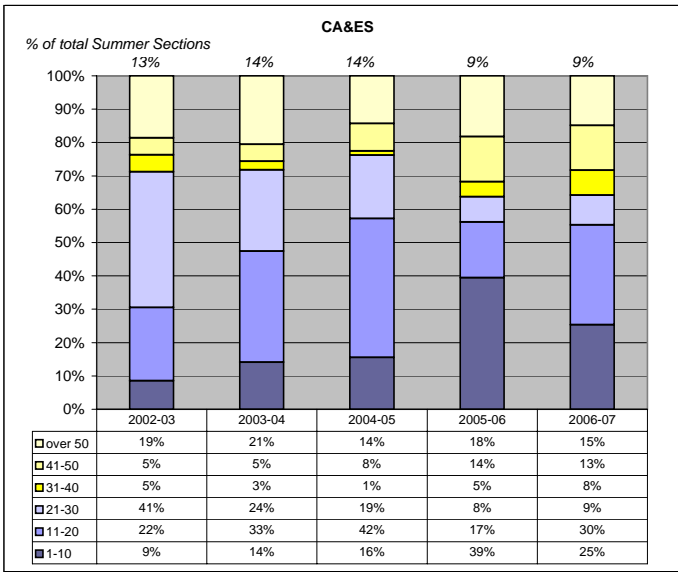
Includes primary, credit bearing sections only. Does not include independent study sections.

Summer Session Enrollment
Percent of Courses vs. Percent of Enrollment
By Class Size Range
Summer 2002 through 2006

FIGURE XIII

Distribution of Sections by Class Size

Distribution of Enrollment by Class Size

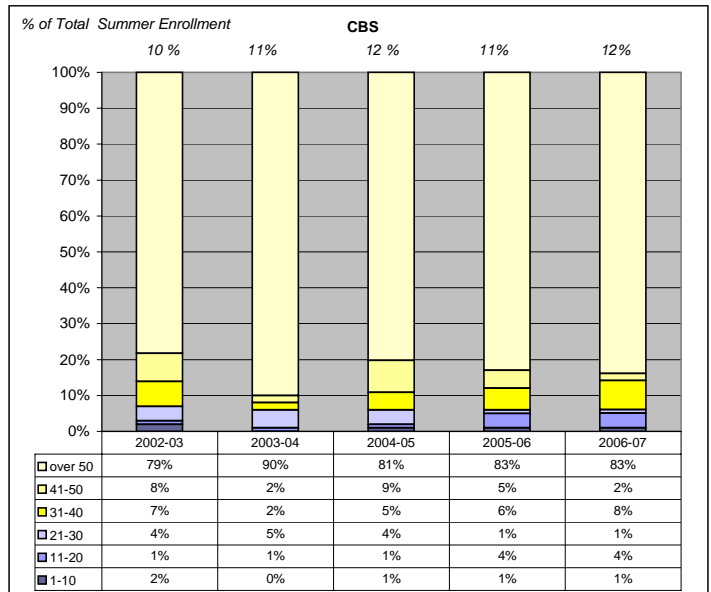
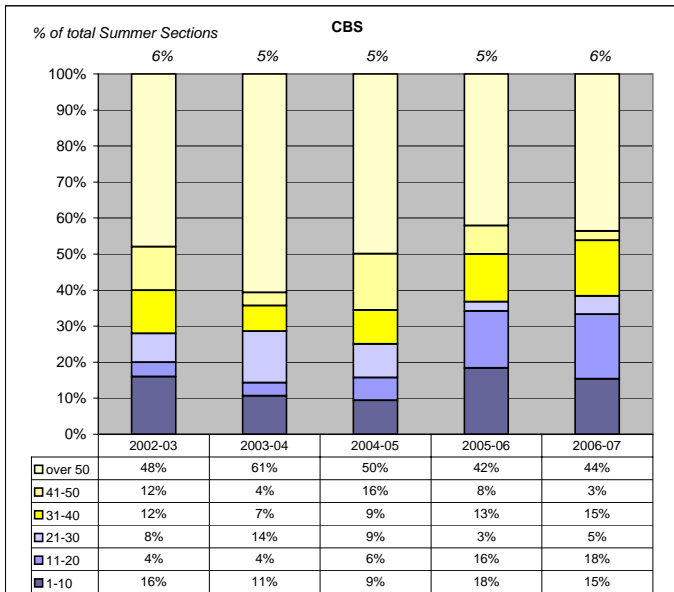
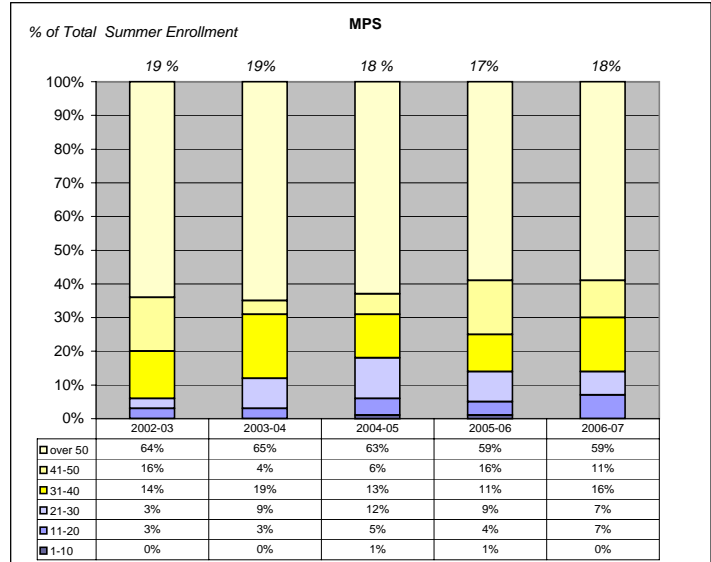
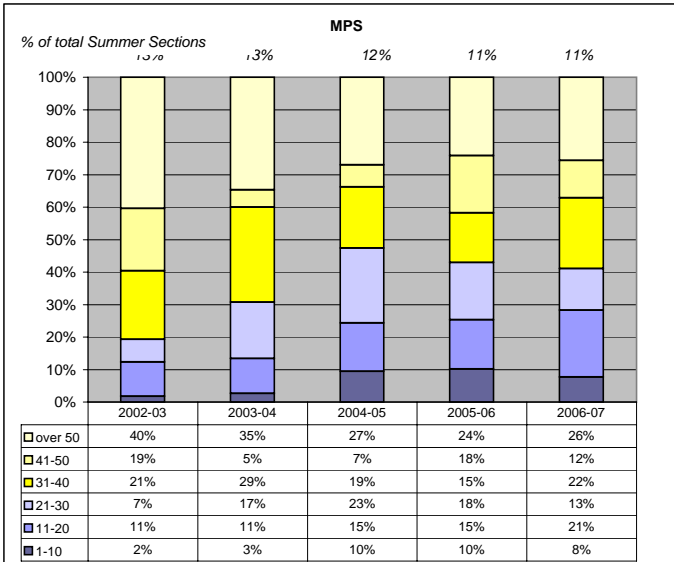
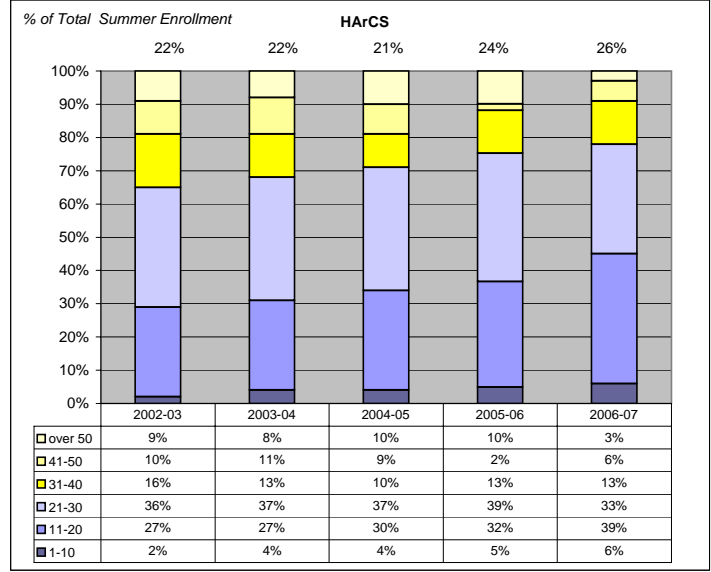
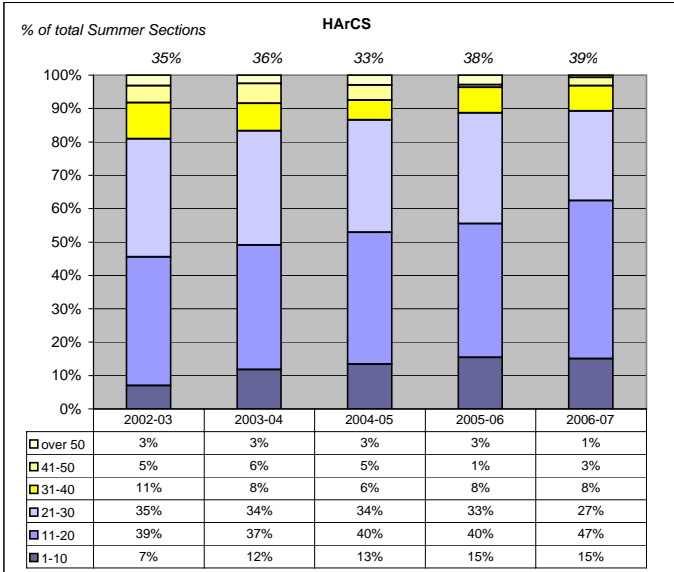


Summer Session Enrollment
Percent of Courses vs. Percent of Enrollment
By Class Size Range
Summer 2002 through 2006

FIGURE XIII

Distribution of Sections by Class Size

Distribution of Enrollment by Class Size



Changes in Financial Aid Recipients and Composition of Summer Enrollment

	<u>2003</u>	<u>2004</u>	<u>2005</u>	<u>2006</u>
Regular Academic Year				
Students Receiving Financial Aid Grants	8,755	10,433	9,831	10,309
Change over Prior Year		19%	12%	5%
Summer				
Total Student Credit Hours	84,755	82,827	91,711	85,041
Change over Prior Year		-2%	8%	-7%
Total Headcount (Unduplicated)	9,405	9,371	9,927	9,255
Change over Prior Year		-0.4%	6%	-7%
Summer Applications for Financial Aid	3,980	4,011	4,339	4,213
Change over Prior Year		1%	9%	-3%
Students Paid Grant Aid	2,651	2,581	3,701	2,412
Change over Prior Year		-3%	40%	-35%
Students Not Receiving Grant Aid	6,754	6,790	6,226	6,843
Change over Prior Year		1%	-8%	10%

The financial aid package offered to students during summer 2005 and 2006 was \$1,200 per student

Data Source: Financial aid data was obtained from the Office of Financial Aid. All other data is from the Instructional Activity Reporting system (IAIS).

**SUMMER SESSION FEES
2002 through 2006**

	Summer 2002	Summer 2003	Summer 2004	Summer 2005	Summer 2006
Education Fee - UC Students	\$76 per unit	\$85 per unit	\$126 per unit	\$136 per unit	\$136 per unit
<i>Percent Change from Prior Yr</i>		13%	48%	8%	0%
Education Fee - Non- UC Students	\$100 per unit	\$85 per unit	\$126 per unit	\$162 per unit	\$162 per unit
<i>Percent Change from Prior Yr</i>		-15%	48%	8%	0%
Education Fee Cap	6 units per session	6 units per session	No cap	No cap	No cap (but 8+8 incentive for UC Students)
Student Services Fee (also called the incidental fee or Registration Fee in summer session)	\$111 per session	\$113 per session	\$172 per session	\$208 per session	\$228 per session
<i>Percent Change from Prior Yr</i>		2%	52%	21%	10%
Processing Fee - Non-UC Students only	\$50 per Session	\$0	\$50 per Session	\$50 per Session	\$50 per Session